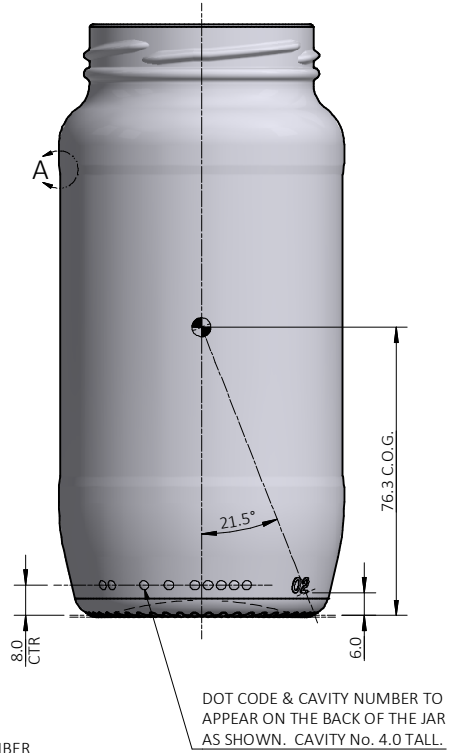
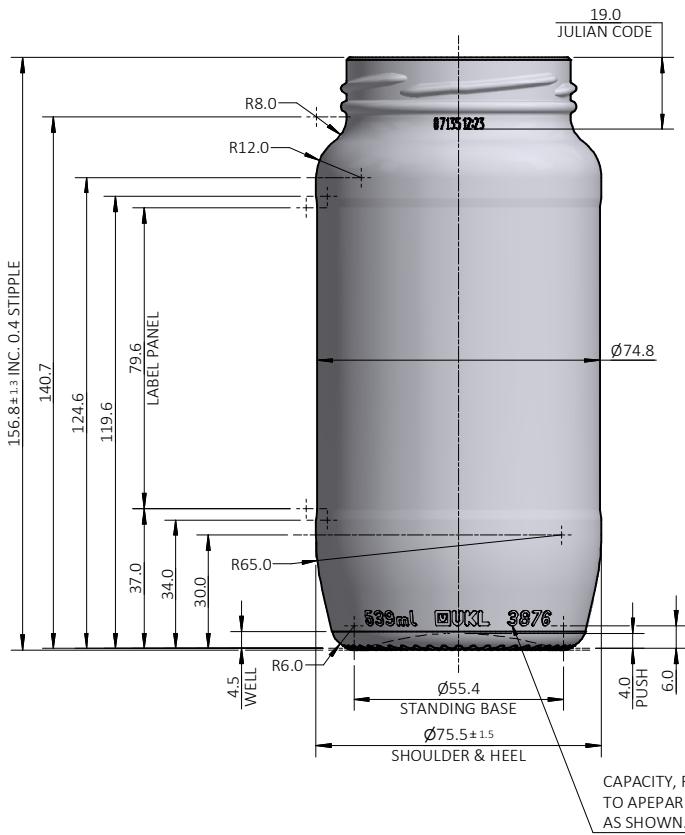
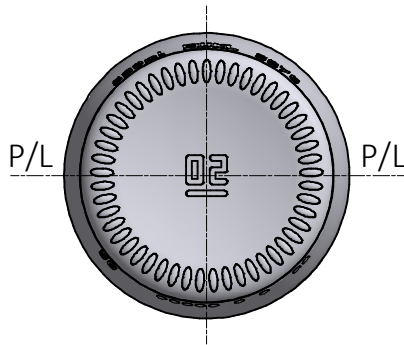


TENTATIVE DESIGN
 THIS DESIGN DOES NOT CONSTITUTE A COMMITMENT TO SUPPLY GLASS CONTAINERS. IT IS SUBJECT TO INTERNAL APPROVAL, RISK ANALYSIS & SAMPLING. FILL POINT IS TENTATIVE & MAY BE SUBJECT TO ADJUSTMENT AFTER SAMPLING.

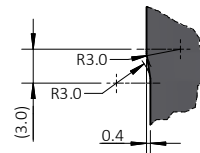


LNMC GRID (3.0) TO APEAR AT PRODUCTION REQUEST

(49) BAR STIPPLE
 5.0 LONG TO STD: 5325-H



A (3 : 1)



DESCRIPTION		CAPACITY AT FILL POINT		APPROX. GLASS WEIGHT		GLASS CONTAINER SPECIFICATION	
539ml LW JAR		ml		240 g		THIS DRAWING IS THE PROPERTY OF VERALLIA UK. REPRODUCTION AND DISTRIBUTION PROHIBITED WITHOUT OUR PRIOR WRITTEN PERMISSION. NON-TOLERANCED DIMENSIONS ARE CONSTRUCTION DIMENSIONS GIVEN FOR INFORMATION ONLY.	
PRODUCT		CAPACITY TOLERANCE		GLASS COLOUR		DETAILS	
FOOD		+/-6.5 ml		STD FLINT		DRN CKD DATE	
PE No.		VACUITY (excl. FITMENT or CORK)		FINISH DESCRIPTION		SPECIFICATION No.	
10215		%		63mm FD138S + BEAD		3876-8052	
CUSTOMER		FILL BELOW TOP		FINISH SPECIFICATION			
GENERAL TRADE		mm		RC8052-RS			
DATE		MEASURING CONTAINER		RING NECK DIAMETER			
30.01.25		ml		59.3mm			
DRAWN		BRIMFUL CAPACITY		MOULD No.			
RW		539.0 ml		3876			
CHECKED		THERMAL SHOCK		REFILLABLE			
LA		STD °C		NO			
SHEET		MAX. INT. PRESSURE		BAR @20°C			
1 OF 1		NIL		PASTEURISED			
SIZE		YES		YES			
A2							
3D MODEL REF.							
3876-8052_539ml-JAR.ipt							
COLOUR COATING							
NONE							
VERTICAL LOAD							
2000 N							