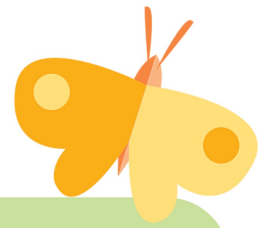


How to build a bug hotel



You can use any of the following:

- Wooden pallets



- Bricks



- Plastic bottles



- Bamboo canes



- Straw



- Leaves



- Tiles

- Cardboard

- Stones / pebbles

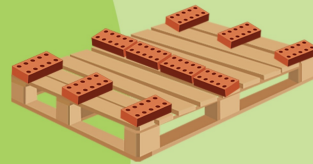


- Twigs / loose bark



Re-use old plastic bottles & always recycle!

1 Place a wooden pallet in your chosen location. On top of your pallet, line bricks along the corners and across the middle.



2 Place your next pallet on top of this and repeat the process for all of your pallets.

3 Cut off the top-two thirds of your bottles. Fill up half with bamboo canes and the other half with cardboard. Place these inside your bug hotel.



4 Fill in the remaining spaces with bricks, leaves, pebbles, stones, tiles, loose bark and cardboard.



5 Add any extra materials you want to recycle e.g. old pipes or carpet. Be creative - add a welcome sign or give your bug hotel a name!

